

NEW AVONLEA P.U.D.

NORTHWOOD SUBDIVISION
(PLATBOOK 1, PAGE 55)

LYING IN A PORTION OF SECTIONS 28 AND 29, TOWNSHIP 37 SOUTH, RANGE 41 EAST,
CITY OF STUART, MARTIN COUNTY, FLORIDA.

UNPLATTED LANDS

UNPLATTED LANDS

NORTH LINE OF THE SE 1/4 OF THE SW 1/4 OF SECTION 28

NORTH LINE OF THE SE 1/4 OF THE SW 1/4 OF SECTION 28

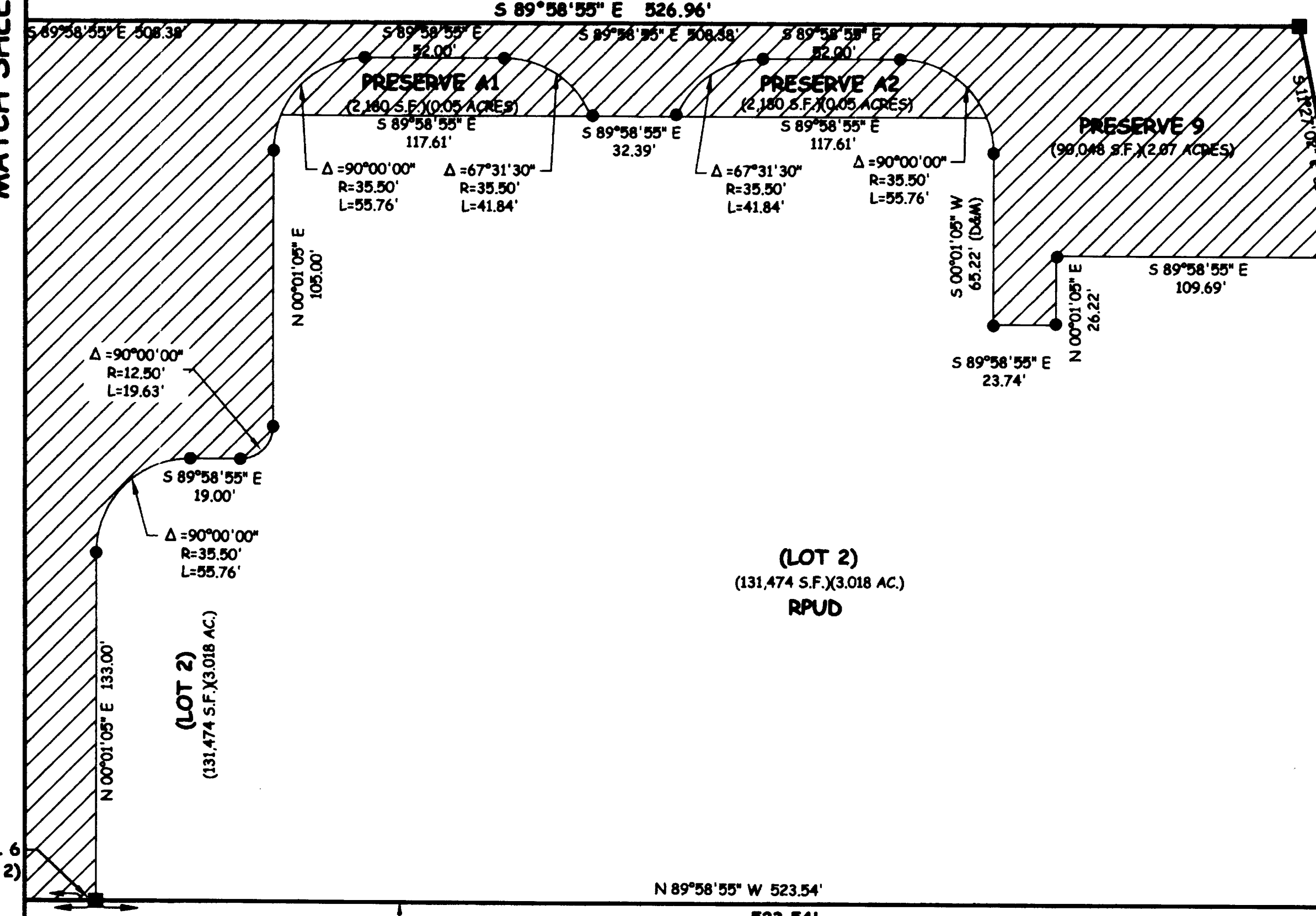
MATCH SHEET 03

N.E. 15TH STREET
EXISTING 50' R/W

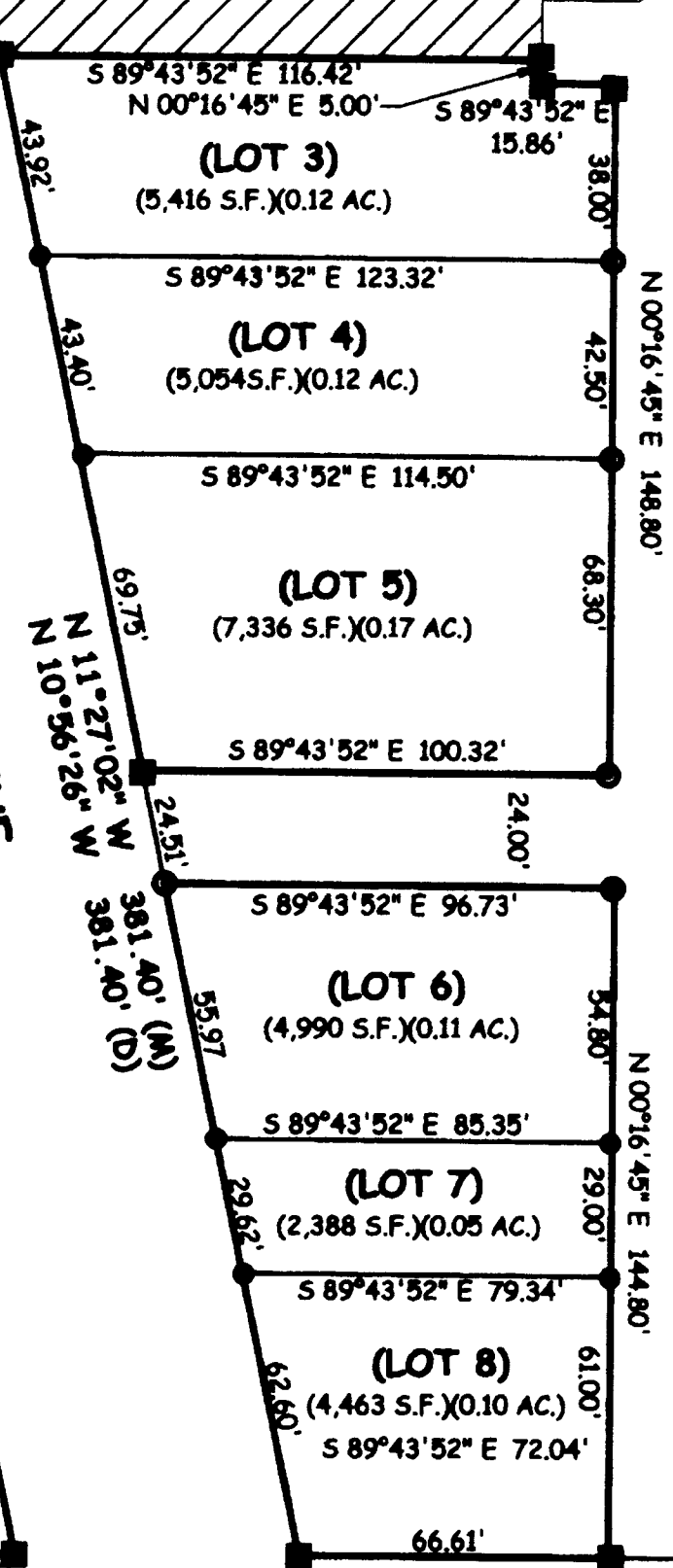
S 89°15'4" E 426.27' (D)
S 89°49'24" E 426.27' (M)

PRESERVE AREA
NOT A PART OF THIS PLAT

- LEGEND**
- AC = ACRES
 - CPUD = COMMERCIAL PLANNED UNIT DEVELOPMENT
 - (D) = DEED
 - ID = IDENTIFICATION
 - L = LENGTH OF ARC
 - LB = LICENSE BUSINESS
 - (M) = MEASURED
 - ORB = OFFICIAL RECORD BOOK
 - PCP = PERMANENT CONTROL POINT
 - PG = PAGE
 - POB = POINT OF BEGINNING
 - POC = POINT OF COMMENCEMENT
 - PRM = PERMANENT REFERENCE MONUMENT
 - R = RADIUS
 - RPUD = RESIDENTIAL PLANNED UNIT DEVELOPMENT
 - R/W = RIGHT OF WAY
 - S.F. = SQUARE FEET
 - P-9 L-1 = PRESERVE 9, LINE 1
 - = SET 5/8" IRON ROD/CAP "VELCON LB 4942"
 - = SET 4"x4" CONCRETE MONUMENT "PRM LB 4942"
 - = SET PCP LB 4942
 - Δ = CENTRAL ANGLE OF CURVE



N.E. CARDINAL AVENUE
EXISTING 60' R/W



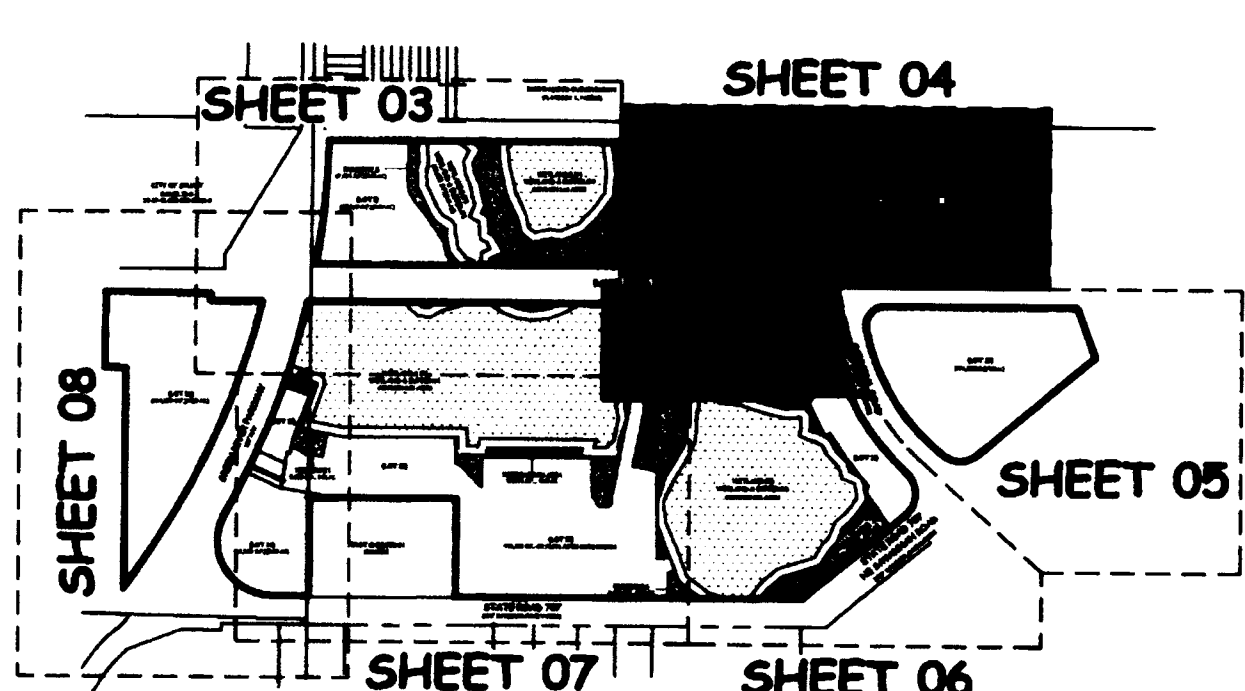
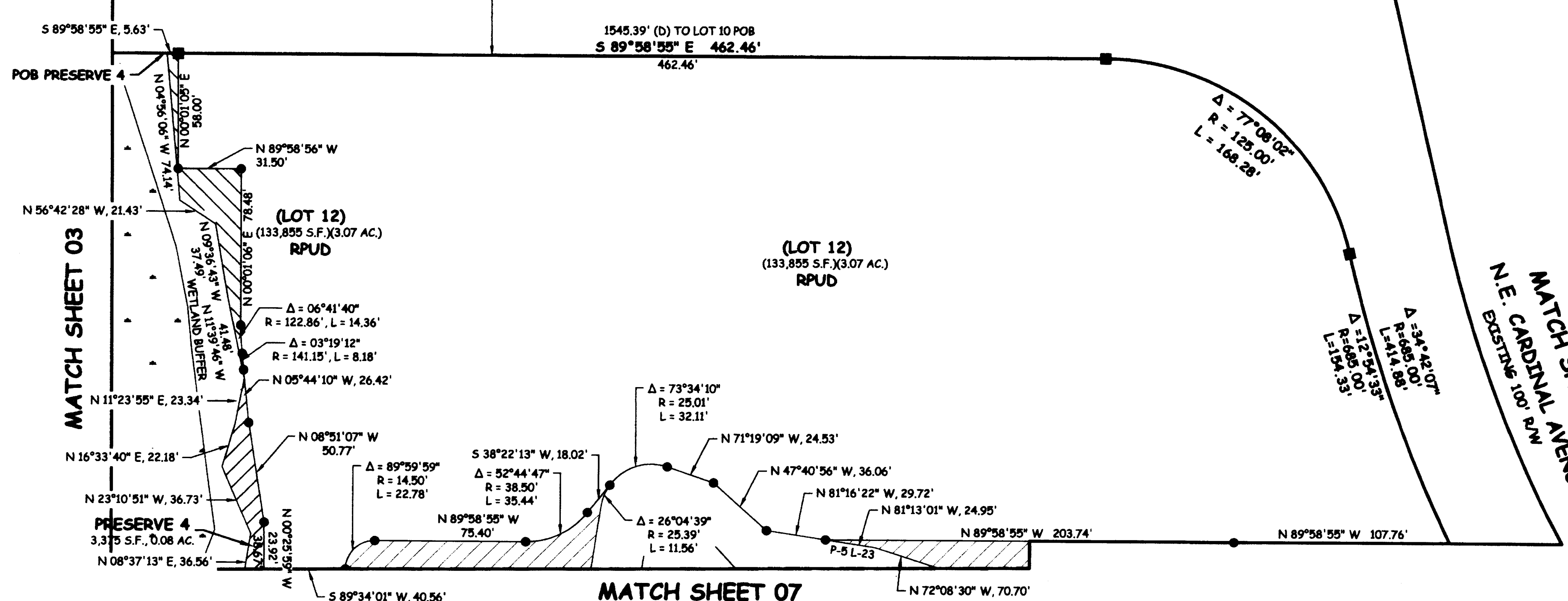
NOT A PART OF THIS PLAT

UNPLATTED LANDS

N.E. BAKER ROAD
EXISTING 100' R/W

N.E. BAKER ROAD
EXISTING 100' R/W

MATCH SHEET 05



PLAT PREPARED BY:

VELCON GROUP, INC.
ENGINEERS & SURVEYORS
CERTIFICATE OF AUTHORIZATION NO. LB 4942
702 S.W. PORT ST. LUCIE BLVD.
PORT ST. LUCIE, FLORIDA 34953
PHONE (772) 879-0477, FAX (772) 871-6659
Web Site: www.velcongroup.com

P:\Projects\13-206\13-206.dwg (D) CTRL 3D DIMENSIONS\13-08 PLAT.dwg, PLAT SHEET 4, 1/19/2016, 2:25:18 PM, Velcon Group, Inc., (772) 879-0477